

***KAMIAK HIGH SCHOOL
BAND
MEMBER'S HANDBOOK***



***TOBY BATHURST
DIRECTOR OF BANDS***

You have chosen to become a member of an organization based upon pride, achievement, and unity. Kamiak band members have been recognized for excellence in field and parade performances, jazz and concert bands. A brief history: Numerous superior ratings at Sno-King Contests for all bands, Sweepstakes Awards (1st place overall) in field marching in 1995, 1997, 1998, 2000, 2001, 2002, 2004, 2005, 2006, 2007, 2008, 2009, 2011, 2012, and 2014. In 1997 Kamiak made history performing at the 53rd Inauguration in Washington DC, and in 1998 the Wind Ensemble was selected to perform at the State Music Teachers Convention in Yakima. In the year 2000 the 200 member Kamiak Show Band traveled to London and Dublin to perform in the prestigious Saint Patrick's Day Parade which helped put Mukilteo and Kamiak on the map, performing for over 25 million viewers in the 2002 Macy's Thanksgiving Day Parade – the first band from Washington State to participate in "America's Parade"!! In 2009, the Show Band represented our school and community once again in sparkling fashion at the Cherry Blossom Parade in Washington D.C. Most recently, The Kamiak Show Band represented our school and community at the Florida Citrus Parade in Orlando Florida in December of 2015. The Show Band also performed at the Macy's New Year's Parade in Universal Studios, Orlando. Kamiak can boast one of the largest, most successful programs in the northwest, with four concert bands, two jazz bands, and a percussion ensemble totaling over 230 band students in all. You have joined an organization that serves its community, and performs music of the highest musical integrity, with a special focus on each individual musician and his or her own musical growth.

Experts have concluded that the study of music helps with spatial reasoning, test taking, and overall quality of life. Factor in social skills, emotional development, leadership training, group interaction, aesthetic perception, music making and the discipline required to be in a music ensemble – you are taking advantage of a great opportunity that goes even beyond the concert stage.

This Handbook is designed to answer any questions you might have concerning the program. Please read all the information and sign the form on the back page of the book. I am honored to be your director and am looking forward to a continuing in the journey towards musical excellence.

*Mr. Toby Bathurst
Director of Bands*

Office Hours: 9:17 AM - 10:24 AM, Conference: Period 3

Email: bathursttp@mukilteo.wednet.edu



COURSE OFFERINGS

CONCERT BAND (grade 9) *Scott McKinlay, Director*

This Band is open to any student with middle school experience playing either a wind or percussion instrument. Essentially the freshman band, this ensemble will focus on scale and etude technique, music understanding and performance. Students are expected to attend evening concerts.

SYMPHONIC BAND (grades 9) *Toby Bathurst, Director*

This intermediate band is for students who have successfully completed course objectives for Concert Band. Students in this Band will be members of the Kamiak Show Band, and will be expected to attend home football events, evening marching band rehearsals, competitions, and tours. Most of the year will be spent on concert literature, with an emphasis on technique, music understanding, and performance.

WIND ENSEMBLE (grades 10, 11, 12) *Toby Bathurst, Director*

This advanced band is for students who have successfully completed course objectives for Symphonic Band. Students in this ensemble may opt to be members of the Kamiak Show Band, but all will be required to attend home football and basketball events, competitions, and tours. Most of the year will be spent on concert literature, with an emphasis on technique, music understanding, and performance.

CHAMBER WINDS (grades 10, 11, 12) *Toby Bathurst, Director*

This is also an advanced band with membership based upon audition. This band, limited to approximately sixty musicians, will focus on literature intended for smaller bands. Students will be expected to participate in advanced music opportunities, such as full orchestra, All-State ensembles and solo & ensemble competitions. Students in this ensemble may opt to be members of the Kamiak Show Band, but all will be required to attend home football and basketball events, competitions, and tours. Most of the year will be spent on concert literature, with an emphasis on technique, music understanding, and performance.

PERCUSSION ENSEMBLE (grades 9, 10, 11, 12) *Toby Bathurst, Director*

This ensemble is open to all percussion students. Membership is limited to students who show an interest in percussion studies and can already read music. The percussion ensemble members will perform with all of the various Kamiak ensembles including: Show Band, Chamber Winds, Wind Ensemble, Symphonic Band, Concert Band, Pep Band. Other opportunities include, but are not limited to solo and ensemble festival, All state/northwest groups, indoor percussion theatre, various festivals, various competitions, various tours, and the Spring musical.

JAZZ ENSEMBLE II (grades 9, 10, 11, 12) *Toby Bathurst, Director*

Music performed by this "0" period intermediate ensemble will emphasize swing, Latin, and some popular styles. Students will be introduced to improvisation techniques, jazz history, and theory. Members of the jazz ensembles will provide music at home basketball games, assemblies, and other special events. This ensemble will attend some jazz festivals throughout the state, both in and outside the school day.

Current membership in Concert Band, Symphonic Band, Wind Ensemble, Chamber Winds, Percussion Ensemble, or Orchestra is required.

JAZZ ENSEMBLE I (grades 9, 10, 11, 12) *Scott McKinley, Director*

Music performed by this advanced ensemble will emphasize swing, Latin, and some popular styles. Students will develop advanced improvisation techniques, jazz history, and theory. Members of the jazz ensembles will provide music at home basketball games, assemblies, and other special events. This ensemble will attend many jazz festivals throughout the state, both in and outside the school day.

Current membership in Concert Band, Symphonic Band, Wind Ensemble, Chamber Winds, Percussion Ensemble, or Orchestra is required.

OTHER PERFORMANCE ENSEMBLES

THE KAMIAK SHOW BAND

The *Kamiak Show Band* is the school marching band. This organization is comprised of members of the Symphonic Band, Wind Ensemble, Chamber Winds, and Percussion Ensemble. The Kamiak Show Band provides half time entertainment at home varsity football games, and plays pep tunes in the stands. Using the modern corps-style of marching, the *Kamiak Show Band* will enter local marching competitions in the fall and two parades in the spring. Commitment for the Kamiak Show Band includes summer Band Camp, held the second week of August, and marching rehearsals, held Tuesday and Thursday evenings from September through October. All Kamiak band students are expected to participate in the Kamiak Show Band at least once in their high school band career. 9th grade students must audition to participate.

BASKETBALL PEP BAND

All Symphonic Band, Wind Ensemble, and Chamber Winds members show support for our women and men's basketball teams by performing at home games. Each student from those ensembles will be required to participate in four games throughout the winter season.

JAZZ COMBOS

Jazz students are encouraged to form formal and informal combos. These volunteer groups rehearse independently, with an emphasis on improvisation. Performance opportunities will be provided for formal combos when ensembles have sufficient amount of charts prepared. Rock combos may perform at athletic events which no pep Band is scheduled.

FULL ORCHESTRA

Principal Chamber Wind, Wind Ensemble, and Percussion Ensemble members will be requested to perform with the school's two full orchestras for pieces requiring winds and percussion. Rehearsals will be held during school during your regularly scheduled band class (generally on Thursdays), however some sectionals will be scheduled before school from 6:20 to 7:10. Members of full orchestra will also travel with the orchestras on trips to major festivals, including the Spring Gresham Orchestra Competition.

CHAMBER ENSEMBLES

Chamber ensembles can be the most rewarding for advanced players. One to a part assignments and preparing the authentic works of great Western composers prepare students for the Solo/Ensemble Festival and other opportunities in the community. Kamiak Ensembles include the Flute Ensemble, Clarinet Quartet, Woodwind Quintet, Saxophone Quartet, Brass Ensemble and Percussion Ensemble.

MUSICAL PIT ORCHESTRA

Working in conjunction with the Drama Department, members of the Kamiak Bands may audition for a part in the pit orchestra for the Spring Musical. Rehearsals are held after school, and students must attend all performances, held in May.

YOUTH SYMPHONIES

Students wishing to perform great symphonic masterworks are encouraged to audition for positions in these community youth orchestras. Rehearsals are held in the evening. The Everett Youth Symphony phone is 425-355-8705, and the Cascade Youth Symphony phone is 425-776-4332. Kamiak musicians are also members of the Seattle Youth Symphony as well.

ALL-STATE/ALL-NORTHWEST

Members of the band program are eligible to audition for these Honor Ensembles. This year All-State audition tapes are due October 1st. Materials can be found on the www.wmea.org web site.

WINTER PERCUSSION ENSEMBLE

Similar to the Winterguard, the Winter Percussion Ensemble rehearses and performs on a painted floor (tarp) in the gymnasium during the winter and early spring months. This group is open to any student from the fine arts programs. Instrumentation is limited to percussion (both marching and concert) as well as electric keyboard and electric bass.

PRIVATE LESSONS

To become masters on their instruments, students should take individual lessons from local professional musicians. Any student interested in university scholarships, majoring in music, or achieving membership in the All-State Ensembles must take private lessons. A list of area teachers is included in this handbook.

GRADING POLICIES – please refer to the course syllabus for actual point breakdowns. Here is a rough breakdown of what you will be graded on each quarter.

35% PERFORMANCE, THEORY AND MUSIC HISTORY TESTS

Student mastery of various music topics, including instrumental technique, articulation, tone, phrasing, literature excerpts, memorization, music theory and music history will be evaluated throughout each quarter. Instrumental skills will be assigned either in a live or taped format. All students must have access to recording devices, or must be prepared to tape tests after school or during lunch periods.

10% LISTENING RESPONSES AND JOURNALS

Guided listening and journal assignments will be held during class time. Students are expected to make-up journals and listening assignments for excused absences. Journals and Listening assignments are evaluated at the end of each quarter, with emphasis on Ideas & Content and use of Voice.

20% DAILY REHEARSAL PARTICIPATION

Important outcomes for Band include attitude, cooperation, leadership and rehearsal attentiveness. This subjective measure will be evaluated by the Band director, and will include observations of equipment care, punctuality to rehearsals, intensive rehearsal concentration, and effort made during rehearsals.

35% PERFORMANCES

Students must attend all scheduled Band performances and evening marching rehearsals. Evaluations will include attendance, proper uniform, audience behavior, and set-up/tear-down participating. Students must complete the “Excused Absence” form **two weeks prior to a performance** and **twenty-four hours before a rehearsal** to receive a make-up assignment. Unexcused absences cannot be made up, and will lower a student’s grade.

QUARTER I MEMBERS OF SHOW BAND ONLY

- 20% MEMORY TESTS**
- 30% REHEARSAL ATTENDANCE**
- 30% GAMES AND COMPETITIONS**
- 10% DAILY REHEARSAL PARTICIPATION**
- 10% JOURNALS**

Any band members who do not elect Show Band must complete four projects to earn credit: 1. Attend all games 2. Attend two competitions, and create two additional projects (i.e. Full Orchestra, All-State tape, solo with written notes, ensemble performance with others, extensive written project, private lessons with solo and written notes)



STUDENT LEADERSHIP

BAND COUNCIL

The Student Band Council will meet on a periodic basis, to discuss issues to include (but not limited to):

- Fund-Raising Opportunities*
- Performance Obligations and Responsibilities*
- Rehearsal Atmosphere*
- Ensemble Goals*
- Student and Council responsibilities*

Each Band Council Member is responsible for duties, which he or she may appoint a committee to assist. All band council members are taken from the SLC (student leadership committee).

President

The President is elected by the Student Leadership Committee and serves as the Committee Head.

He or she is responsible for, but not limited to, the following tasks:

- Act as the Student Leadership Committee Head
- Act as the student representative at all ASB meetings
- They will lead discussions and coordinate agendas for the SLC Meetings as well as keep the discussions organized and effective
- They are responsible for keeping the Student Leadership Committee focused, on task, on/ahead of schedule, and motivated in their duties
- It is the responsibility of the President to consistently communicate with all members of the SLC about the goals of the program and to maintain progress toward achieving said goals
- Working closely with the Head Drum Major in an advisory role
- Discuss important matters, work quickly to resolve issues, and provide assistance when necessary
- To collect input and relate the opinions and views of the committee to the instructional staff
- To coordinate and maintain the schedule and operations of the SLC
- Preparing/coordinating important announcements (emails and other informational releases) for the SLC and Show Band

Vice-President

The Vice President is elected by the Student Leadership Committee and serves as the Event Planning Sub-Committee Advisor. They are responsible for, but not limited to, the following tasks:

- Working closely with the Assistant Drum Majors in an advisory role
- Discuss important matters, work quickly to resolve issues, and provide assistance when necessary
- Helping to coordinate the attendance policies and recording/organizing current Show Band attendance as well as coordinating absence recovery and record keeping
- To oversee the voting process and is responsible for reporting the results
- Aids the President in preparing important announcements (emails and other informational releases) for the SLC and Show Band
- In charge of setting up the stage for all band concerts.

Secretary

The Secretary is elected by the Student Leadership Committee and serves as the Rules Sub-Committee Advisor. They are responsible for, but not limited to, the following tasks:

- Documenting all discussions through extensive note taking and preparing supplemental handouts and minutes from SLC meetings
- Overseeing the proofreading and finalizing of SLC official documents
- Aids the President and Vice President in preparing important announcements (emails and other

Secretary (cont.)

- informational releases) for the SLC and Show Band
- Working closely with the 2nd Assistant Drum Major in an advisory role

Historian

The Historian is elected by the Student Leadership Committee. They are responsible for, but not limited to, the following tasks:

- Organizing and filing music in the band library
- Documenting and filing past Show Band award winners
- Coordinating instrument check-out and rental agreements
- Maintaining the proper documentation (i.e. serial numbers, repair history, photographs, etc.)
- Band scrap-book/Band Annual and/or DVD

Member at Large – Non-chair holding members of the SLC with voting rights. Can participate in any subcommittee.

They are responsible for the following tasks:

- Participating in all discussions and providing valuable, constructive input
- Leading their sections to the best of their ability, using the Squad Leader Guidelines

Drum Majors

Head Drum Major – is determined through the Show Band application process and works closely with the Cabinet Members to oversee functions of the SLC and Show Band. They are responsible for, but not limited to, the following tasks:

- Working closely with the President; discuss important matters, work quickly to resolve issues, and provide assistance when necessary
- Leading the band to the best of their ability by following the Drum Major Checklist
- Coordinating the responsibilities of the Squad Leaders and Assistant Drum Major(s) and ensuring they have everything they need to be successful
- Keeping all of the Show Band Members focused and motivated throughout the entire season
- Working closely with the Show Band Instructional Staff to coordinate resources and run efficient and effective rehearsals
- Act as Show Band Member Productivity Committee Head, including establishing and updating important member documents (rehearsal etiquette, uniform care, etc.)

Assistant Drum Major(s) – is determined through the Show Band application process and works closely with the Cabinet Members to oversee functions of the SLC and Show Band. They are responsible for, but not limited to, the following tasks:

- Working closely with the Vice President in an advisory role
- Discuss important matters, work quickly to resolve issues, and provide assistance when necessary
- Responsible for keeping track of Show Band Member attendance and recommending changes to the attendance policy
- Overseeing the absence recovery process and coordinating assistance to Show Band Members who need it
- Working closely with the Historian in an advisory role
- Discuss important matters, work quickly to resolve issues, and provide assistance
- Coordinating instrument check-out and rental agreements
- Maintaining the proper documentation (i.e. serial numbers, repair history, photographs, etc.)
- Leading the band to the best of their ability by following the Drum Major Checklist

OTHER LEADERSHIP POSITIONS

Squad Leaders

Squad leaders are active during the marching season, and are responsible for:

- Planning Summer Band Camp
- Communication with squad members
- Calling and leading squad rehearsals
- Assisting with drill instruction
- Memory Pass-Offs
- Squad attendance

Section Leaders

Principal players for each section in each concert band are responsible for:

- Part assignments
- Sectional rehearsals
- Section behavior
- Section attendance

REHEARSAL EXPECTATIONS

During rehearsals and performances, students are expected to be on time, not to talk or distract, and use good judgment when working with other people, equipment, and the room. Participating in a music ensemble requires the same behaviors required of individuals in the workforce – striving for a common goal, sacrificing for the team, and acknowledging that achievement through the group effort is a rewarding a character-bulling activity. In our music ensembles our success results in meeting personal and ensemble artistic expression through the art of music making – and this happens not only on the stage but also in the rehearsal room. Rehearsals that are disciplined, focused, rigorous, and controlled will be productive and positive. This will allow for the unified expression for the ensemble and personal expression for the musician. We will then want to do more, get better, achieve higher heights and jump hurdles we don't even yet see!!!

Timeliness

By starting rehearsals on time with the proper equipment, we:

- a. Improve ensemble and individual performance as we maximize our actual playing time and avoid unnecessary delays;
- b. Set a standard for the entire ensemble, as this behavior indicates the ensemble is important to us as individuals, and we are willing to sacrifice social and non-musical behaviors for the performance of the ensemble

Rehearsal Focus

By restricting conversation to musical and rehearsal matters, we:

- a. Improve ensemble and individual performance as we allow sections to rehearse, and optimize communication between sections and the conductor;
- b. Set a standard for the entire ensemble, as this behavior indicates the ensemble is important to us as individuals, and we are willing to sacrifice social and non-musical behavior for the performance of the ensemble.

Respect for Each Other

By refraining from personal put-downs, offensive language, and necessary comments, we:

- a. Improve ensemble and individual performance as we can approach the music with a positive attitude, thus optimizing time on playing and minimizing conflict mediation;
- b. Set a standard for the entire ensemble, as this behavior indicates the ensemble is important to us as individuals, and we are willing to resolve problems outside rehearsal time, using proper communication channels and methods.

Respect for Property, Rehearsal Room, and Instruments

By taking the time to put equipment in its proper storage place, taking care with instruments even when hurried, and keeping the room picked-up from unnecessary debris, we:

- a. Improve ensemble and individual performance as we reduce delays in rehearsal that are unnecessary;
- b. Set a standard for the entire ensemble, as this behavior indicates the ensemble is important to us as individuals, and we are willing to take the time to be organized for the performance of the ensemble

20% of each quarter grade is based upon daily rehearsal behavior, evaluated by the instructor twice each quarter.

NOTE: INSTRUMENTS KEPT IN THE INSTRUMENT LOCKER ROOM ARE NOT THE RESPONSIBILITY OF KAMIAK HIGH SCHOOL OR THE MUSIC DEPARTMENT! STUDENTS ARE ISSUED LOCKS AND LOCKERS TO ASSIST WITH SECURITY AND SURVEILLANCE CAMERAS ARE LOCATED IN THE LOCKER ROOM AS WELL.

BAND ROOM EXPECTATIONS

1. Students are only allowed in the Band room when an instructor is present, or when specific permission is granted.
2. Students must ask permission to use the Director's telephone
3. Students must ask to use the Band stereo
4. Students should knock, and then receive permission to enter the Director's Office
5. Practice Rooms with pianos are locked. See a music staff member for admittance

FIELD TRIP EXPECTATIONS

1. Report to the Band Room at least fifteen minutes prior to trip departure time
2. Take the time to make a mental checklist of all necessary equipment: instrument, music, reeds, oil, etc.
3. The Percussion Section Leader is responsible for percussion equipment, including auxiliary equipment
4. Wind players are expected assist the percussion section and Band Director with carrying equipment onto the buses or other vehicles
5. When a chaperone, student, bus driver, or the Band Director stands in the front of the bus asking for your attention, you are to sit down, face the front, be quiet, and listen immediately!
6. Treat the bus driver and the bus with respect, using good manners and being responsible for trash

ATTENDANCE POLICY

REHEARSALS, CONCERTS, COMPETITIONS, & OTHER PERFORMANCES

Excused absences are either pre-arranged or are caused by illness or family emergency. Students must still complete make-up assignments to receive grade credit – either written or performance. Unexcused absences cannot be made up, and will result in a grade drop. The number of performances determines the amount of grade loss for that quarter. Repeated unexcused absences may result in loss of travel privileges, or even ensemble membership. Two unexcused absences from evening marching rehearsals may require a Band member to relinquish his or her spot to a substitute.

MUKILTEO SCHOOL DISTRICT CO-CURRICULAR DRUG, ALCOHOL AND TOBACCO ELIGIBILITY POLICY

The District expects students will abide by all laws relating to drugs and alcohol and will remain drug and alcohol free 365 days of the year. The District will impose disciplinary consequences if a co-curricular participant violates the drug and alcohol policy. This policy is in effect from the first practice/rehearsal until the last day of the school year. Mukilteo School District holds the following as grounds for denial of participation and/or dismissal from co-curricular activities:

1. *Illegal consumption, possession, or sale of alcoholic beverages.*
2. *Illegal consumption, possession, or sale of drugs or narcotics.*
3. *Illegal use of tobacco products.*

The effects for confirmed violation of the above are detailed in the *Secondary School Athletic Policy Handbook*. Because band ensembles are curricular courses, violation of above grounds will not result in dismissal from courses or curricular concerts and performances, but could result in loss of membership in the Kamiak Show Band and loss of traveling and field trip privileges. Students will not be eligible to represent their school at All-State events, State Solo Contest or other optional activities

EARNING A KAMIAK ACTIVITY LETTER IN BAND

A Kamiak High School Band Letter is a symbol that represents:

Dedication to the Kamiak High School Band Program; Involvement in activities that support the Associated Student Body of Kamiak High School; Excellence in musical performance.

To Earn a Band Letter, a band student must:

- A. Attend all performances or arrange an excused absence
- B. Successfully complete Two years of Show Band
- C. Complete at least Three of the following options within the year:
 1. Participate in Jazz I or II
 2. Complete an audition tape for All-State Ensembles
 3. Perform in a solo or ensemble at Sno-King Festival
 4. Take at least four months of private lessons on band instrument
 5. Member of Youth Symphony (Everett, Cascade, Seattle)
 6. Perform in Pit Orchestra for Spring Musical
 7. Attend two professional concerts organized through Kamiak, generally a concert performed by the Seattle Symphony Orchestra and/or the Everett Symphony Orchestra
 8. Participate an additional year in the Kamiak Show Band
 9. Donating six hours of service to band – flip folders, ushering, general fundraising, extra pep games, etc.
 10. Hold a leadership position – officer, drum major, squad leader
 11. Participate in the Kamiak Winterguard or Winter Percussion.
 12. Participate in the Kamiak Orchestra (PS1 or PS2) for a full year.
 13. Participate in the Kamiak Tri-M chapter for a full year.

Letters will be presented at the final Evening Concert of the school year, after the letter requirements are fulfilled. A band student may purchase a KHS letter jacket and band/jazz symbol upon receiving his or her initial letter. Hash bars are then presented each ensuing school year in which the letter requirements are fulfilled.

UNIFORM REQUIREMENTS

SHOW BAND

School Provided Parts: Pants, Jacket, Shako

Student Provided Parts: Marching Shoes, Black Socks, Plume(s), Gloves, Compression Shirt, and garment bag.

WIND ENSEMBLE AND CHAMBER WINDS

Men: Tuxedo jacket and pants (provided by school), black bow tie and tuxedo shirt, black dress shoes and black socks

Women: All black, **full-length dress/skirt**, long sleeve top, conservative cut (No low cut! No backless! No midriff cutouts!) Black hose and black dress shoes (no sandals).

SYMPHONIC BAND and CONCERT BAND

White top, black slacks or skirt, black shoes and black socks or hose. **Men are to wear a solid colored tie.**

FINES

At the end of every year, some Band students are faced with school fines due to lost equipment and materials. Be aware of these most common fines: Locks (\$5), Band text books (\$10), sheet music (\$2 per page), Flip Folders (\$15), and all checked out uniform parts. Outstanding uniform costs must be paid before receiving final report card. There is also a \$25 Late Fee for Tuxedos and Show Uniforms not submitted at the last performance

FITTING BAND INTO THE FOUR-YEAR SCHEDULE

With planning, the college-bound Band student should have little trouble fitting Band into his or her four year plan. Completing two years of Fine Arts is now required for graduation, starting with the class of 2019. Students wishing to take Jazz Band will also need to enroll in a large ensemble during the regular school day. This is also a requirement for participation in Show Band, Pep Band, Barbershop/Jazz Choir, the pit section for the spring musical, and Kammerstreich.



Private Area Studio Teachers

LAST	FIRST	INSTRUMENT	PHONE	LOCATION	E-MAIL
Bondurant	Nancy	Bassoon	206.533.8327	Rosehill/Edmonds	nbondurant@earthlink.net
Peterson	Francine	Bassoon	425.481.4467	Bothell	
Edwards	Micheal	Clarinet/Sax	206.527.4186	North Seattle	
Stafford	Neil	Clarinet/Sax	425.771.7020	Lynnwood	
Ziefel	Jenny	Clarinet/Sax	425.315.9076	Mukilteo	
Buetow	Julie	Clarinet	425.481.1692	Mukilteo	julie_buetow@worldnet.att.net
Cantor	Mary	Clarinet	206.364.7710		
Colyn	Debra	Clarinet	425.423.0246	Rosehill Center	
Fay	Kim	Clarinet	425.483.4449	Shoreline	kimfay@whidbey.com
Fay	Kim	Clarinet	425.489.9578		
Kochoff	Alex	Clarinet	206.353.8831	Everett	
Peterson	Art	Clarinet	425.513.0240		
Speece	Richard	Clarinet	206.366.8712	Rosehill Center	
Stirling	Nicole	Clarinet	425.337.9456		stirlingsounds@hotmail.com
Arnestad	Bonnie	Flute	425.355.8291	Mukilteo	
Bondurant	Nancy	Flute	206.533.8327	Rosehill/Edmonds	nbondurant@earthlink.net
Calixto	Jenna	Flute	206.365.4369	North Seattle	jenna@calixto.net
Crandall	Barb	Flute	425.774.7713	Edmonds	
Dolan	Janice	Flute	425.487.3834	Bothell	
Floe	Annie	Flute	425.672.8044	Edmonds	
Ingram	Iris	Flute	425.377.0623	Lake Stevens	
Jolivet	Sarah	Flute	206.261.7688	North Seattle	ILoveFlutes@aol.com
Liebetanz	Klaus	Flute	425.771.7020	Lynnwood	
Lindquist	Ann	Flute	425.438.3889	Rosehill Center	
Swanson	Marilyn	Flute	425.337.3226		
Primozik	Nancy	Flute	425.259.1829		
Ryker	Pamela	Flute	253.752.2135	North Seattle	
Szpak	Lisa	Flute	425.742.2299	Edmonds	
Wilhelmi	Wendy	Flute	206.365.6458		
Logan	Barb	Flute/Flute Choir	360.629.3978	Everett	
Shatto	Linda	Flute/Flute Choir	425.486.2502	Northshore	
Thomas	Steve	Flute/Sax	(4254) 486-5000		
Ellis	Lance	French Horn	(425) 338-9948	Edmonds	
Jensen	Barb	French Horn	(206)774-2863	Edmonds	
Deane	Cindy	French Horn/Brass	(425) 712-0136	Mountlake Terrace	
Smith	Alex	Guitar/Bass	(360) 659-9187	Everett	
Bondurant	Nancy	Oboe	206.533.8327	Rosehill/Edmonds	nbondurant@earthlink.net
Douthitt	Kara	Oboe	356-1302	Olivia Park Elem	
Fisher	Dana	Oboe	(425) 670-1815	Lynnwood	
Hages	Brent	Oboe	206.755.8669	Bothell	brenthowarth@aol.com
Hamilton	Joy	Oboe	775-6206	Edmonds	
Sigmund	Chris	Oboe	(425) 290-9500	Rosehill Center	

Private Area Studio Teachers

Bathurst	Toby	Percussion	(425) 923-3022	Mukilteo	
Lennard	Chris	Percussion	(425) 232-8323	Seattle	
Roy	Steve	Percussion	(425) 745-8455		
Seattle Drum School		Percussion	(206) 364-8815	Seattle	
Alvarez	Ian	Percussion/Percussion	(425) 742-8246	Edmonds	
Welle	Talmon	Piano	206.217.1124	Mukilteo Mills Music	talmanmusicman@aol.com
Moses	Kenneth	Piano/Theory	(360) 638-1185		
Hendrick	Mandy	Sax	(425) 787-2879	Mukilteo	
Jordan	Robbie	Sax/Clarinet	(425) 239-2786	Mukilteo	
DeJoi	James	Sax/Clarinet/Flute	(206) 633-3198		
Edwards	Micheal	Sax/Clarinet/Flute	(206) 527-4186	Seattle	
Cole	Richard	Sax/Clarinet/Woodwinds	(206) 670-1452		
Metcalf	Greg	Sax/Clarinet/Woodwinds	(425) 335-3262	Everett	
Bradley	Bob	Sax/Flute	(425) 327-9712	Edmonds	
Gowers	Todd	String Bass	(206) 524-1843	North Seattle	
Smith	Collard	String Bass	(253) 543-8986	Mountlake Terrace	
Tinuviel	Kim	String Bass	(360) 321-4563	Rosehill Center	
Bentley's		String Repair	(425) 303-9248	Everett	
Berg	Curt	Trombone	(425) 747-5343		
Hay	Jeff	Trombone	(425) 524-5640	Edmonds	
Park	Bill	Trombone	(206) 285-3867	North Seattle	
Ritt	Dave	Trombone	362-2928		
Scharen	Will	Trombone	(425) 741-3801	Mukilteo	
Shurts	Gary	Trombone	823-5076		
Wiese	Chuck	Trombone	(425) 787-9760	Lynnwood	
Bell	Nelson	Trombone/Tuba/Euph	(360)799-1576	Rosehill Center	
Cole	Cathy	Trombone/Tuba/Euph	882-0944	Bothell	
Parrish	Trevor	Trumpet	206-552-0647	Seattle/Mukilteo	
Allison	Brad	Trumpet	(425) 774-0239	Edmonds	
Barrow	Ron	Trumpet	(206) 528-2920		
Bergevin	Jake	Trumpet	(206)258-6093	Everett	
Caldwell	Steve	Trumpet	364-6800		
Gudorf	Joe	Trumpet	425.377.2111	Lake Stevens	musictnv@msn.com
Hall	Kevin	Trumpet	(425) 379-5911		kevinh@foxinternet.net
LaMoreaux	Dave	Trumpet	(360) 658-1316		
Martyn	Ray	Trumpet	778-8992	Edmonds	
Ray	Jeff	Trumpet	(425) 356-1306	Olympic View	
Roulton	Jay	Trumpet	(425) 483-2852	Bothell	
West	Patrick	Trumpet	(425) 971-1831	Kennelly Keys	
Sisko	Jim	Trumpet/Jazz	(206) 525-8171		
Thompson	Kyle	Trumpet/Brass	(425) 330-7583	Duval	
Caldwell	Ken	Trumpet/Trombone	(425) 356-1306	Rosehill Center	

Concert Hospitality Schedule

All snacks must be commercially prepared

All the students & families enjoy a snack & beverage after the concert. Families can drop off their snack or beverages at the hospitality counter, in the PAC Lobby prior to the concert. (someone is usually setting up around 6PM)

Thank you for contributing to concert hospitality!

Winter Concert (December)	Chamber Winds Percussion	cookies, doughnuts, or cupcakes single serve bottled water, juice boxes or Capri Sun
March Concert (March)	Symphonic Band Chamber Winds	cookies, doughnuts or cupcakes single serve bottled water or juice boxes or Capri Sun
June Concert (June)	Wind Ensemble Percussion	cookies, doughnuts or cupcakes single serve bottled water, juice boxes or Capri Sun



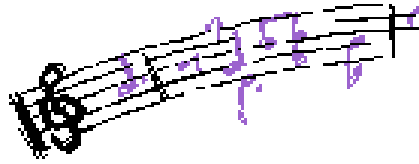
Instrumental usage fees

Kamiak has adopted usage fees for students who use school instruments. This is designed to offset the yearly costs for instrument maintenance and equipment. The rental fee is \$35 per year for “shared instruments” (examples listed below) and \$70 for single use instruments.

Program	Classification	Fee	Duration	Examples
Band	Single-use School Instruments	\$70.00	<i>full year fee</i>	oboes, bassoons, French horns, concert piccolos, bass clarinets, contrabass clarinet, baritone saxophones, tubas & euphoniums, etc.
	Shared School Instruments	\$35.00	<i>full year fee</i>	possibly tubas, bari saxes, percussion etc.
	Second Instrument (marching band use)	\$35.00	<i>full year fee</i>	piccolos, mellophones, marching bass clarinets, marching tubas, marching baritones
	Percussion	\$35.00	<i>full year fee</i>	All members of Percussion Ensemble, Jazz Ensemble
Orchestra	Shared School Instruments	\$35.00	<i>full year fee</i>	Cellos, Basses, including jazz basses
	Single-use School Instruments	\$70.00	<i>full year fee</i>	Violas, home cellos
Guitar	Shared School Instruments	\$10.00	<i>semester fee</i>	All who use school guitars



The Kamiak Band Handbook is available for you to read and review on the KPAB website at www.kamiakarts.org/band.html. If you are unable to open the handbook and would like a printed copy, please notate that below.



CONTRACT FOR MEMBERSHIP IN THE KAMIAK HIGH SCHOOL BAND

Please return this page by Friday, September 9

I, _____, affirm that I have read and understand the Kamiak High School Band Handbook. I further affirm that I will abide by the rules, regulations, and intent of this Handbook, and understand the penalties for not doing so. I understand that an unexcused absence from a rehearsal or performance will seriously affect my grade in Band, and those personal belongings, including instruments, are not the responsibility of the Mukilteo School District, especially in the case of theft. I have had all questions concerning the content of this Handbook answered and will do my best to live up to the intent of this contract.

Student Signature _____ **Date** _____

Ensemble(s) Circle all that apply

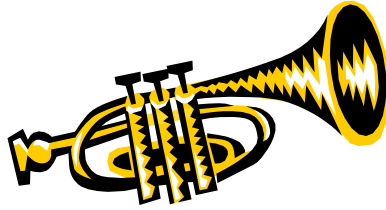
Chamber Winds Wind Ensemble Symphonic Band Concert Band Jazz Band 1 Jazz Band 2

Show Band Orchestra Winter Percussion Winterguard

I/We have read the Kamiak High School Band Handbook and have discussed it with my/our child. I/We will do our best to encourage him/her to abide by the rules and regulations of the Band.

Parent Signature _____ **Date** _____

___ I am unable to read the band handbook online and would like a hard copy.



PERFORMING ARTS BOOSTERS

Kamiak Bands enjoy the support of an active parent volunteer group, the Kamiak Performing Arts Boosters. The goals of the organization include:

- a. To support the goals and objectives of the Band program
- b. To assist the director and students with administrative and logistical support when requested
- c. To help promote a positive image of the Band program throughout the community
- d. To provide financial support for the Band program
- e. To foster communication between the Band director, Band parents, and Band students
- f. To foster a feeling of parental involvement and support between parents and students

Volunteers are sought on the following specific committees: Fund-raising, Chaperones, Travel, Equipment, Uniforms, Hospitality and Membership.

Band Booster meetings are held bi-monthly in the Band Room. Executive Board meets at 5:30 PM, while the General Membership meets at 7:00 PM. On the back of the handbook is a booster volunteer sign-up sheet.

Visit the Boosters and the Band Web Page online at ***KAMIAKARTS.ORG***



KAMIAK HIGH SCHOOL PERFORMING ARTS BOOSTERS
Membership and Student Account Information Form

Student _____	Student ID # _____	Grad Year 20 __
Parent / Guardian(s) _____		
Parent Email #1 _____	Parent Email #2 _____	
Home phone # () _____	Parent Mobile # 1() _____	
Parent Mobile # 2() _____		
Address _____	City _____	Zip _____
Student Email _____	Student Mobile #() _____	

Parent Volunteer Sign Up

Performing Arts Boosters is a volunteer organization -- there are many ways you can help in the distribution of activities! Please mark below which area(s) you would like to be involved.

- ___ Hospitality (planning, procuring & providing refreshments at designated events)
- ___ Equipment Handling (maintenance, setup & assistance, storage & transporting)
- ___ Chaperones (working behind the scenes during trips & competitions)
- ___ Medical Professional, able to advise or assist on trips
- ___ Spring Showcase: Our MAIN fundraising EVENT
- ___ Night in Vienna Dance (Planning, decorating, publicity for annual Orchestra dance)
- ___ Messiah Performances (Planning, decorating, publicity for our special holiday performances)
- ___ Finance Committee (Assist treasurer with data entry, collections, throughout year)
- ___ Uniforms (Fittings, maintenance, care & upkeep, inspection, assistance, storage)
- ___ Advisory (legal and/or financial consultation)
- ___ Communications/Phone Tree/Email
- ___ Newsletter Asst. (includes help getting newsletter collated and mailed)
- ___ Public Relations/Publicity (community & school outreach thru media)
- ___ Website (development, maintenance of Booster website)
- ___ Videographer/Photographer

Special Interest: _____

Membership Fee

Many parents have expressed a desire to contribute to the mission of the Performing Arts boosters but are frustrated by their lack of time to commit to various projects. To assist these busy parents there is an alternate way to benefit all students. You may elect to donate \$100 in lieu of volunteer hours. This will allow you to feel a part of the effort and mission despite your demanding work and family commitments. Of course you are welcome to donate this membership as well as volunteer, and please note, all membership fees are directed to the Band Fund.

Amount enclosed _____.

(Checks may be placed in the locked Booster Treasurer's Box in the band room)